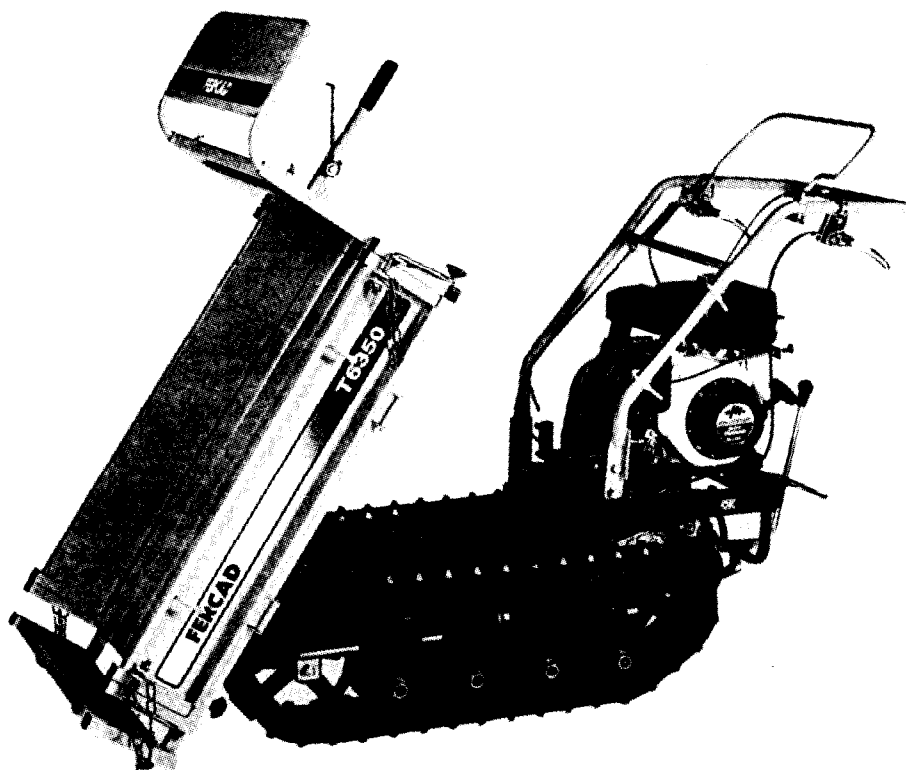


YANMAR GASOLINE CARRIER

YANMAR

PARTS CATALOG



MODEL

T6350

Published

JAN., 1999

NPC-3660

YOUR PARTS ORDERING

- When placing your parts order with us, Please contact us upon confirming the Model, Part No., Description and Q'ty of the parts you want to order by this parts catalog.
First look for the illustration of the part you want. Then you can find out the necessary informations by tracing the illustration No., as each illustration corresponds to the parts list on the following page.
- All parts the illustrations of which are not numbered shall not be sold separately.
- You are asked to prepare parts, especially consumable parts in the demand season earlier, as orders will come with a rush in this season.
- Parts other than those due to misshipping on your part shall not be allowed to returned in principle.
- Please surely use YANMAR Genuine Parts in any YANMAR Product.
(Use of similar goods (parts) on the market causes earlier damage or worsening of performance.)

HOW TO READ THIS PARTS CATALOG

- In the case where a Ref. No. given in the list does not agree with the corresponding Sketch No. in illustration (no suffix number as shown below), an illustration for such a New Part has been omitted only in the case of a parts change for which Interchangeability Symbol N, R or K is given.

[Example]

Sketch No. in Illustration	Ref. No. in List	
1	1	(Before the change)
2	1	(After the change)
	2	


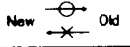
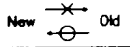
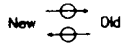
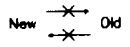
- Indication and meaning of level
Level

-A number of dots indicated is called the level which refers to the assembly-component relation of an assembly part.
(* refers to an assembly part.)
-Refers to a component included in an assembly part indicated by one dot (*).
-Refers to a component included in a complete part indicated by two dots (**).
(It indicates a sub-component of pertinent assembly part indicated by one dot (*).)

- Indication and meaning of interchangeability symbol

(Given under the column "I" next to the quantity column in the list)

In the case where a parts change took place, one of the following interchangeability symbols is indicated for that part:

Symbol	Interchangeability	Contents note
N	New  Old	New Part is interchangeable for Old Part but not interchangeable conversely.
P	New  Old	Same as symbol N but supply of Old Part is suspended and New Part is sold in the future.
Q	New  Old	New Part is not interchangeable for Old Part but interchangeable conversely.
R	New  Old	New Part is interchangeable for Old Part and vice versa.
S	New  Old	New Part is not interchangeable for Old Part and vice versa.
W		Part newly added.
Z		Part discontinued.
F		Not interchangeable by single part but interchangeable by set of the related parts.
K		Changed only in quantity used.

- Remarks (column "R" given at the right end of the list)
9-1) A numerical or alphabetic character (symbol) may be indicated under the column "R".
9-2) A comment (remarks) for a part in question is given at the lower part of the list, following a symbol identical to the aforementioned symbol when a symbol is indicated under the column "R".
- Virtual No. in illustration
A Sketch No. in illustration containing an encircled numeral indicates other related Group No.

[Example]

③ - 1	Group No. 3	indicated.
	Ref. No. 1	

- Change Effective Machine No.

When a part is changed, a Change Effective Machine No. of such a model for which a New Part is applied is indicated as follows:

[Example] Model columns A ~ F

(Model indication is given in two kinds, namely, 4-model and 6-model indications.)
correspond to A ~ F in front of Change Effective Machine No..

4-model Indication

(A) =
(B) =
(C) =
(D) =

6-model Indication

(A) =	(D) =
(B) =	(E) =
(C) =	(F) =

[Example] A=F610001 B=F612001

Model column A indicates that a parts change is put into effect from Machine No. 610001 and on. And moreover Model column B indicates that a parts change is put into effect from Machine No. 612001 and on.

[Classification]

E	Engine No.	indicated.
F	Machine Body No.	
R	Rotary Unit No.	

- Additional Group No. found in the Revised Edition

Kindly understand that a Group No. other than consecutive numbers has been entered in the case where the corresponding Group is added within the pertinent Section.

[Example]

Section

BODY SECTION

Group No. Group name

- 46. ENGINE FIXTURE & BATTERY
- 47. FRAME & HYDRAULIC PUMP
- 48. BEVEL GEAR CASE
- 49. TRANSM. CASE & RUNNING CLUTCH
- 50. CONTROL LEVERS
- 51. CRAWLER

- 64. ENGINE FIXTURE & BATTERY
- 65. CONTROL LEVERS

(Group added for the YSR1300-N)
(Group added for the YSR1300-N)

SNOW REMOVAL SECTION

- 52. CHUTE
- 53. SNOW REMOVAL FRAME & BLOWER

Additional Groups are indicated.

Owing to the improvement of YANMAR Product involved or its parts, the contents of this Parts Catalog may be altered without prior notice to you.

ESPECIFICACIONES

Modelo		T6350
Motore	Modelo	GA160SCSA
	tipo	OHV (4 tempi benzina)
	potenza	5.8/4000
	avviamento	a fune autoavvolgente
Dimensioni	lunghezza mm	1610
	larghezza mm	680
	altezza mm	1015
Peso	Kg.	190
Piattaf. carico dimensioni	lunghezza mm	920/1120
	larghezza mm	615/1050
	altezza	150
Portata max	Kg.	(350) 450
Sollev. pianale	Kg.	manuale
Trasmissione	n.marce.	2 avani + 2 retro
	frizione	a tensione a cinghia
	freno	ad espansione interna
Carro cingolato	appoggio mm	640
	larghezza mm	180
	interasse	470
Tendicingolo		a molla
Velocità	1A	1,7
	2A	2,9
	1R	1,6
	2R	2,8

CONTENTS

YOUR PARTS ORDERING SPECIFICATIONS

ENGINE UNIT(GA160E-SCSA)

GROUP NO. GROUP NAME

1. CYLINDER BLOCK
2. CYLINDER HEAD & BONNET
3. TOOL & LABEL
4. AIR CLEANER & MUFFLER
5. CRANKSHAFT, PISTON & CAMSHAFT
6. FUEL OIL TANK & FUEL OIL LINE
7. CARBURETOR
8. GOVERNOR & CONTROL DEVICE
9. FLY. MAGNET & STARTING DEVICE

BODY SECTION

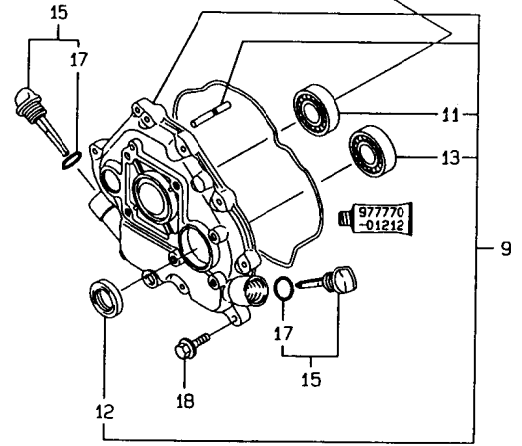
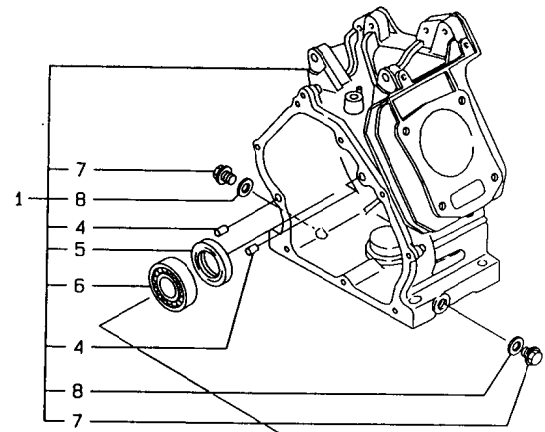
10. FRAME
11. CONTROL SECTION
12. PLATFORM CARRIER

TRANSMISSION UNIT

13. TRANSMISSION

PARTS INDEX

1. CYLINDER BLOCK



N132444

(REMARKS) "EFFECTIVE MACHINE NO." OF
 ENGINE IS INDICATED ON THE
 ENGINE LABEL WHICH IS SHOWN
 IN FIG.9.

1803
 (1802)
 NPC-3660

1. CYLINDER BLOCK

98.12.15

(A)=GA160E-SCSA (D)=
 (B)= (E)=
 (C)= (F)=

REF. NO.	LEV. 0	PART NO.	DESCRIPTION	Q'TY						
				(A)	(B)	(C)	(D)	(E)	(F)	
1	.	760690-01561	BLOCK ASSY, CYLINDER	1						1
4	..	114270-01600	PARALLEL PIN 8X12		2					1
5	..	160690-02220	OIL SEAL TC25416	1						1
6	..	24101-062050	BALL BEARING	1						1
7	..	160610-01690	PLUG, DRAIN		2					1
8	..	104200-59170	GASKET 12	2						1
9	.	760690-01510	COVER ASSY, SIDE	1						1
11	..	24101-062050	BALL BEARING		1					1
12	..	160690-02220	OIL SEAL TC25416	1						1
13	..	24101-062050	BALL BEARING	1						1
15	.	114299-01760	CAP, W/LUB.OIL GAUGE		2					1
17	..	114299-01950	O-RING		2					1
18	.	26476-060252	BOLT M 6X 25, TAPPING	8						10

REMARKS (REMARKS) "EFFECTIVE MACHINE NO." OF
 ENGINE IS INDICATED ON THE
 ENGINE LABEL WHICH IS SHOWN
 IN FIG.9.

N132444

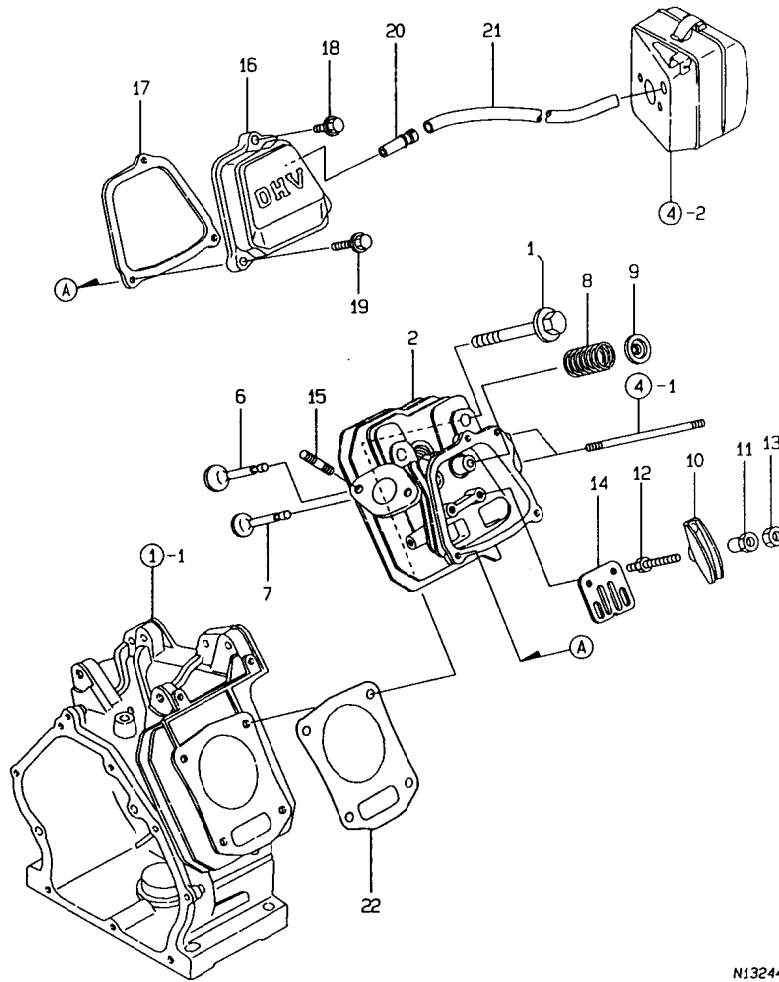
2. CYLINDER HEAD & BONNET

1804
(1802)
NPC-3660

2. CYLINDER HEAD & BONNET

98.12.15

(A)=GA160E-SCSA (D)=
(B)= (E)=
(C)= (F)=



N132445

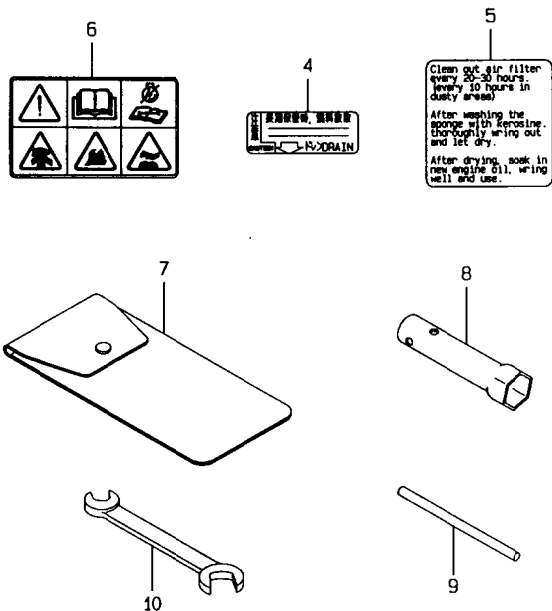
(REMARKS) "EFFECTIVE MACHINE NO." OF
ENGINE IS INDICATED ON THE
ENGINE LABEL WHICH IS SHOWN
IN FIG.9.

REF. NO.	LEV. 0	PART NO.	DESCRIPTION	-----Q'TY-----						I P/U A R
				(A)	(B)	(C)	(D)	(E)	(F)	
1	.	160610-04201	BOLT M 8X 53	4						1
2	.	160690-11010	HEAD ASSY, CYLINDER	1						1
6	.	160690-11100	VALVE, INTAKE	1						1
7	.	160690-11110	VALVE, EXHAUST	1						1
8	.	160690-11120	SPRING, VALVE	2						1
9	.	160690-11180	RETAINER, SPRING	2						1
10	.	160690-11200	ARM, ROCKER	2						1
11	.	160690-11221	PIVOT, ROCKER ARM	2						1
12	.	160690-11271	BOLT	2						1
13	.	160690-11280	NUT M6X 0.5	2						1
14	.	160690-11290	PLATE, GUIDE	1						1
15	.	26216-080182	STUD M 8X 18 PLATED	2						1
16	.	160690-11300	BONNET	1						1
17	.	160690-11310	GASKET, BONNET	1						1
18	.	26106-060202	BOLT M 6X 20 PLATED	1						10
19	.	26106-060352	BOLT M 6X 35 PLATED	2						10
20	.	160690-03050	BREATHER	1						1
21	.	160810-03180	PIPE, BREATHER	1						1
22	.	160690-01330	GASKET, CYL. HEAD	1						1

REMARKS (REMARKS) "EFFECTIVE MACHINE NO." OF
ENGINE IS INDICATED ON THE
ENGINE LABEL WHICH IS SHOWN
IN FIG.9.

N132445

3. TOOL & LABEL



1805
(1802)
NPC-3660

3. TOOL & LABEL

98.12.15

(A)=GA160E-SCSA (D)=
(B)= (E)=
(C)= (F)=

REF. NO.	LEV. 0	PART NO.	DESCRIPTION	-----Q'TY-----						I P/U A R
				(A)	(B)	(C)	(D)	(E)	(F)	
4	.	160520-07272	LABEL, DRAIN	1						1
5	.	160664-07370	LABEL, AIR CLEANER	1						1
6	.	160991-07260	LABEL	1						1
7	.	160110-92610	BAG, TOOL	1						1
8	.	160120-92700	SPANNER, BOX	1						1
9	.	160110-92710	BAR	1						1
10	.	28110-100120	WRENCH 10X12	1						1

N132446

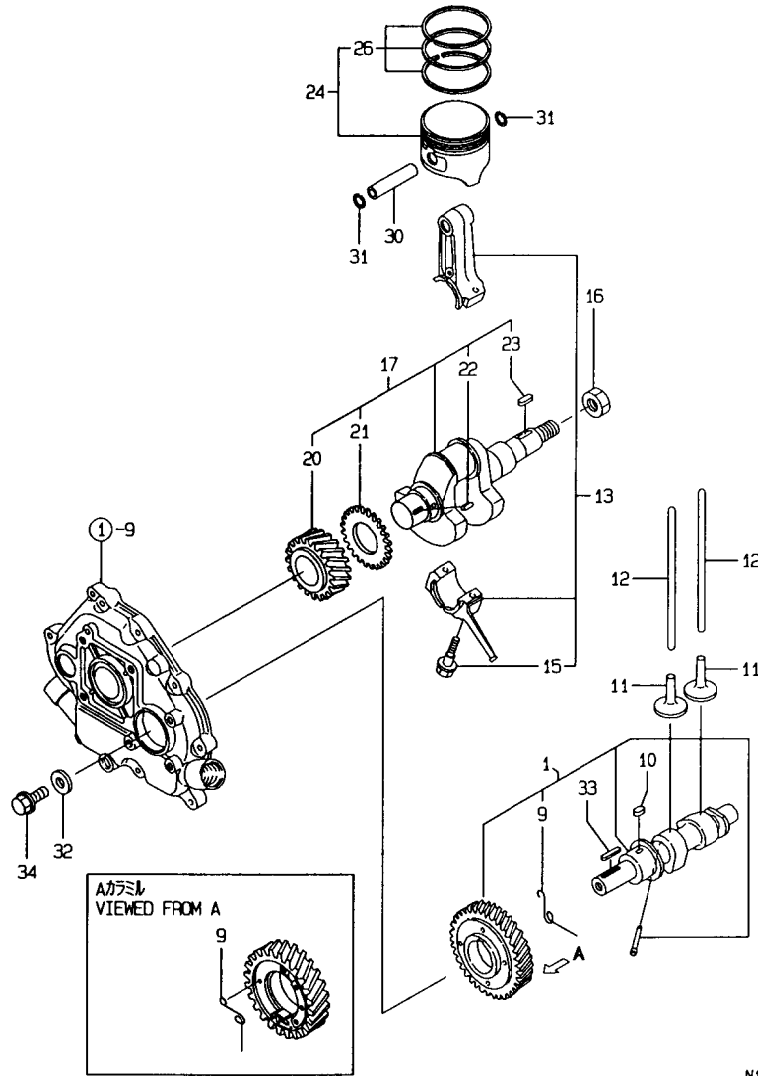
 | (REMARKS) "EFFECTIVE MACHINE NO." OF
 |
 | ENGINE IS INDICATED ON THE
 | ENGINE LABEL WHICH IS SHOWN
 | IN FIG.9.

REMARKS

 | (REMARKS) "EFFECTIVE MACHINE NO." OF
 |
 | ENGINE IS INDICATED ON THE
 | ENGINE LABEL WHICH IS SHOWN
 | IN FIG.9.

N132446

5. CRANKSHAFT, PISTON & CAMSHAFT



N132448

↑-----↑
 | (REMARKS) "EFFECTIVE MACHINE NO." OF
 |
 | ENGINE IS INDICATED ON THE
 | ENGINE LABEL WHICH IS SHOWN
IN FIG.9.

↑-----↑
 | 1B07 |
 | (1B02) |
 ↑-----↑
 NPC-3660

5. CRANKSHAFT, PISTON & CAMSHAFT

98.12.15

(A)=GA160E-SCSA (D)=
 (B)= (E)=
 (C)= (F)=

REF. NO.	LEV. 0	PART NO.	DESCRIPTION	-----Q'TY-----						I	P	U	A	R
				(A)	(B)	(C)	(D)	(E)	(F)					
1	.	160690-14051	CAMSHAFT ASSY.	1										1
9	..	160690-14571	SPRING, DECOMP.	1										1
10	.	22512-040120	KEY 4X 12	1										1
11	.	160490-14200	TAPPET	2										1
12	.	114250-14400	ROD, PUSH	2										1
13	.	760690-23700	ROD ASSY, CONNECTING	1										1
15	..	26106-060302	BOLT M 6X 30 PLATED	2										10
16	.	160610-04910	NUT M14	1										1
17	.	760690-21702	CRANKSHAFT COMP	1										1
20	..	160690-21201	GEAR, CRANKSHAFT	1										1
21	..	160590-21210	GEAR, IDLE	1										1
22	..	22512-040120	KEY 4X 12	1										1
23	..	22512-040160	KEY 4X 16	1										1
24	.	160690-22011	PISTON W/RINGS	1										1
26	..	760690-22501	RING SET (T.R.=1.5)	1										1
30	.	160690-22300	PIN, PISTON	1										1
31	.	22252-000160	CIRCLIP 16	2										10
32	.	160310-14550	WASHER	1										1
33	.	22512-050300	KEY 5X 30	1										1
34	.	26106-080202	BOLT M 8X 20 PLATED	1										10

----- REMARKS -----
 | (REMARKS) "EFFECTIVE MACHINE NO." OF
 |
 | ENGINE IS INDICATED ON THE
 | ENGINE LABEL WHICH IS SHOWN
IN FIG.9.

N132448

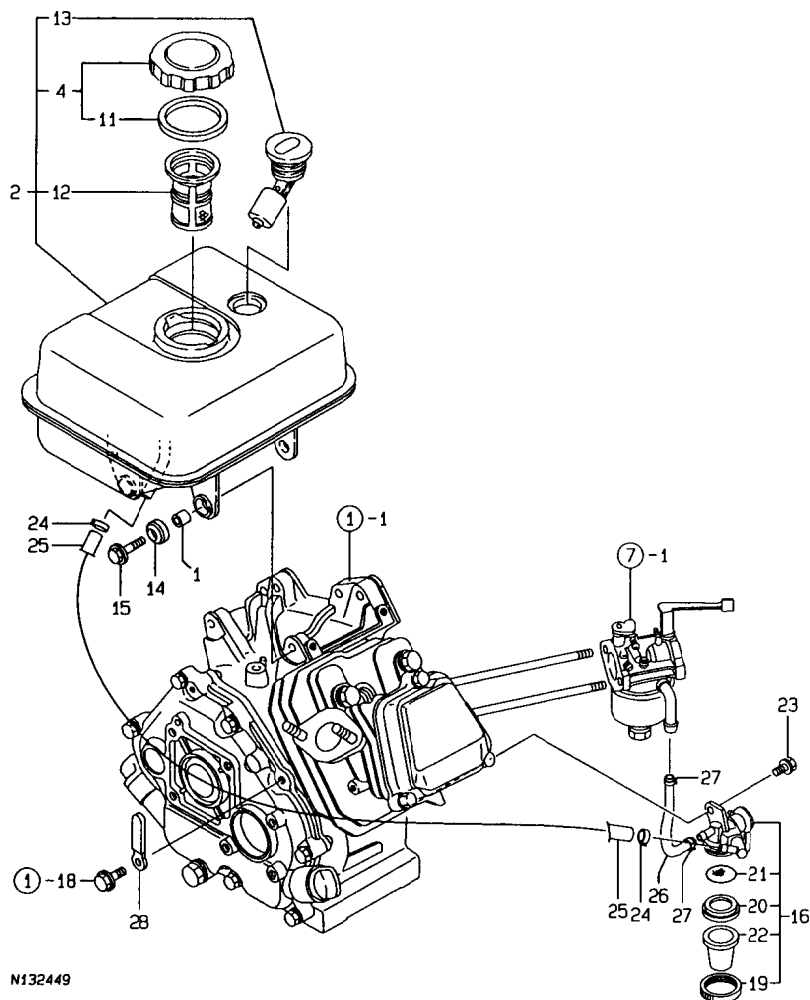
6. FUEL OIL TANK & FUEL OIL LINE

1B08
1B02
NPC-3660

6. FUEL OIL TANK & FUEL OIL LINE

98.12.15

(A)=GA160E-SCSA (D)=
(B)= (E)=
(C)= (F)=



N132449

(REMARKS) "EFFECTIVE MACHINE NO." OF
ENGINE IS INDICATED ON THE
ENGINE LABEL WHICH IS SHOWN
IN FIG.9.

REF. NO.	LEV. 0	PART NO.	DESCRIPTION	Q'TY						I	P/U	A	R
				(A)	(B)	(C)	(D)	(E)	(F)				
1	.	114250-45310	COLLAR	4									1
2	.	760690-55710	TANK ASSY, FUEL	1									1
4	..	160710-55061	CAP ASSY, FUEL TANK	1									1
11	...	160393-55050	GASKET, TANK CAP	1									1
12	..	160610-55100	STRAINER	1									1
13	..	160762-55150	GAUGE, FUEL	1									1
14	.	160690-55461	DAMPER, FUEL TANK	4									1
15	.	160690-55140	BOLT, FAN CASE	4									1
16	.	160692-55300	COCK ASSY, FUEL	1									1
19	..	160710-55360	RING	1									1
20	..	160710-55370	GASKET	1									1
21	..	160710-55382	FILTER	1									1
22	..	160710-55390	BOWL, STRAINER	1									1
23	.	26106-060102	BOLT M 6X 10 PLATED	1									10
24	.	106990-44660	BAND, HOSE	2									1
25	.	160802-59370	PIPE, FUEL	1									1
26	.	160820-59390	PIPE, FUEL	1									1
27	.	124060-77680	CLAMP 10	2									1
28	.	160710-78710	CLAMP, CORD	1									1

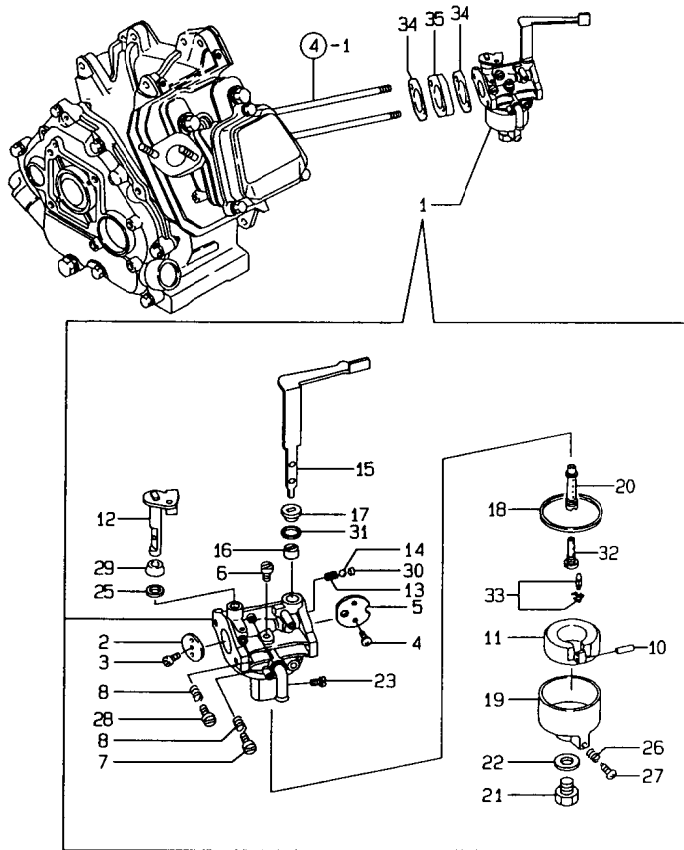
REMARKS

(REMARKS) "EFFECTIVE MACHINE NO." OF

ENGINE IS INDICATED ON THE
ENGINE LABEL WHICH IS SHOWN
IN FIG.9.

N132449

7. CARBURETOR



N132450

-----+
 | (1) REPAIR PART.
 | (REMARKS) "EFFECTIVE MACHINE NO." OF
 |
 | ENGINE IS INDICATED ON THE
 | ENGINE LABEL WHICH IS SHOWN
IN FIG.9.

7. CARBURETOR

98.12.15

-----+
 | 1B09 |
 | (1B02) |
 -----+
 NPC-3660

(A)=GA160E-SCSA (D)=
 (B)= (E)=
 (C)= (F)=

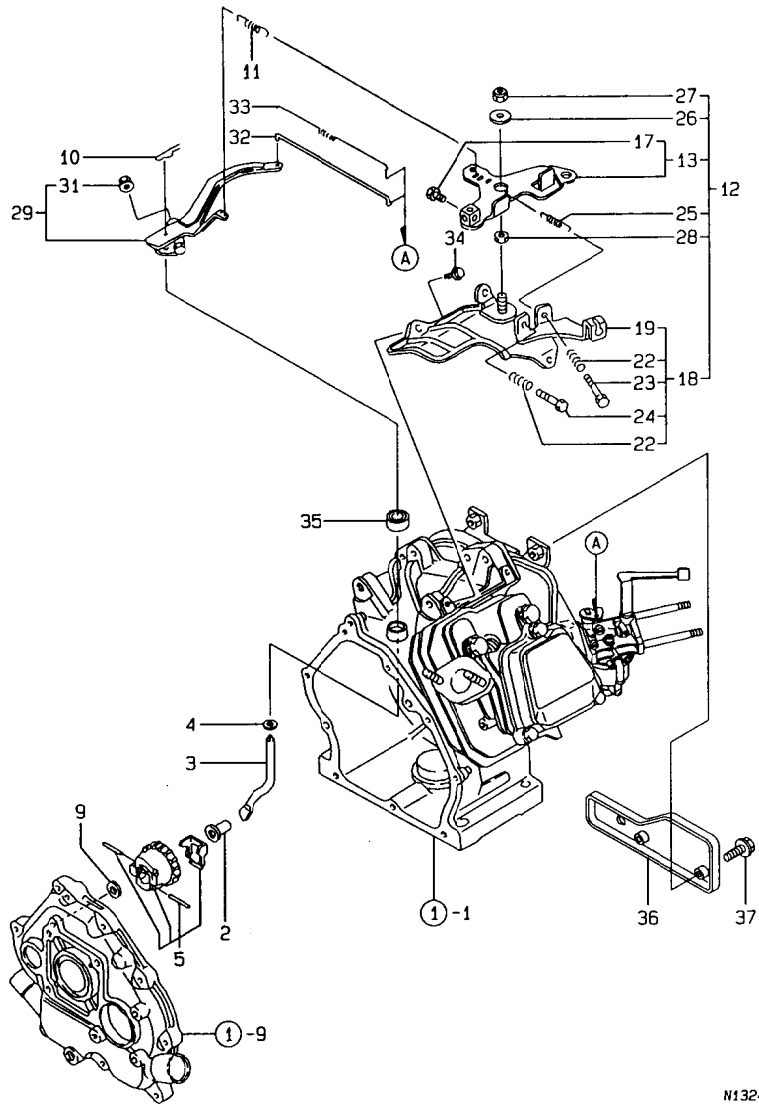
REF. NO.	LEV. 0	PART NO.	DESCRIPTION	-----Q'TY-----						I	P	U	A	R
				(A)	(B)	(C)	(D)	(E)	(F)					
1	.	160697-56011	CARBURETOR ASSY	1										1
2	..	160592-56540	VALVE, THROTTLE	1										1
3	..	160690-56560	LEVER, CHOKE	1										1
4	..	160690-56570	SCREW	2										1
5	..	160590-56530	VALVE, CHOKE	1										1
6	..	160492-56540	JET, PILOT	1										1
7	..	160692-56710	SCREW	1										1
8	..	181230-56380	SPRING	2										1
10	..	160610-56630	PIN, FLOAT	1										1
11	..	160697-56620	FLOAT ASSY	1										1
12	..	160692-56640	SHAFT, THROTTLE	1										1
13	..	160310-56980	SPRING, CHOKE	1										1
14	..	160310-56990	BALL, STEEL	1										1
15	..	160697-56650	FLOAT	1										1
16	..	160810-56580	RING, CHOKE SHAFT	1										1
17	..	160810-56590	RING, CHOKE LEVER	1										1
18	..	160610-56610	GASKET	1										1
19	..	160769-56640	BODY, FLOAT CHAMBER	1										1
20	..	160693-56570	NOZZLE, MAIN	1										1
21	..	160769-56660	BOLT	1										1
22	..	160610-56611	GASKET	1										1
23	..	160693-56580	JET, MAIN	1										1
25	..	160640-56850	SEAL	1										1
26	..	181230-56380	SPRING	1										1
27	..	160610-56900	SCREW	1										1
28	..	160667-56750	SCREW, ADJUSTING	1										1
29	..	160702-56720	RING	1										1
30	..	160692-56700	SEAL, RUBBER	1										1
31	..	160692-56800	SEAL, RUBBER	1										1
32	..	160690-56751	NOZZLE	1										1
33	.	160692-56560	VALVE, NEEDLE (RUBBER)	1										1 (1)
34	.	160610-56150	GASKET, CARBURETOR	2										1
35	.	160690-56160	SPACER	1										1

-----+
REMARKS

| (1) REPAIR PART.
 | (REMARKS) "EFFECTIVE MACHINE NO." OF
 |
 | ENGINE IS INDICATED ON THE
 | ENGINE LABEL WHICH IS SHOWN
IN FIG.9.

N132450

8. GOVERNOR & CONTROL DEVICE



N132451

 | (REMARKS) "EFFECTIVE MACHINE NO." OF
 |
 | ENGINE IS INDICATED ON THE
 | ENGINE LABEL WHICH IS SHOWN
 | IN FIG.9.
 |

1B10
 1B02
 NPC-3660

8. GOVERNOR & CONTROL DEVICE

98.12.15

(A)=GA160E-SCSA (D)=
 (B)= (E)=
 (C)= (F)=

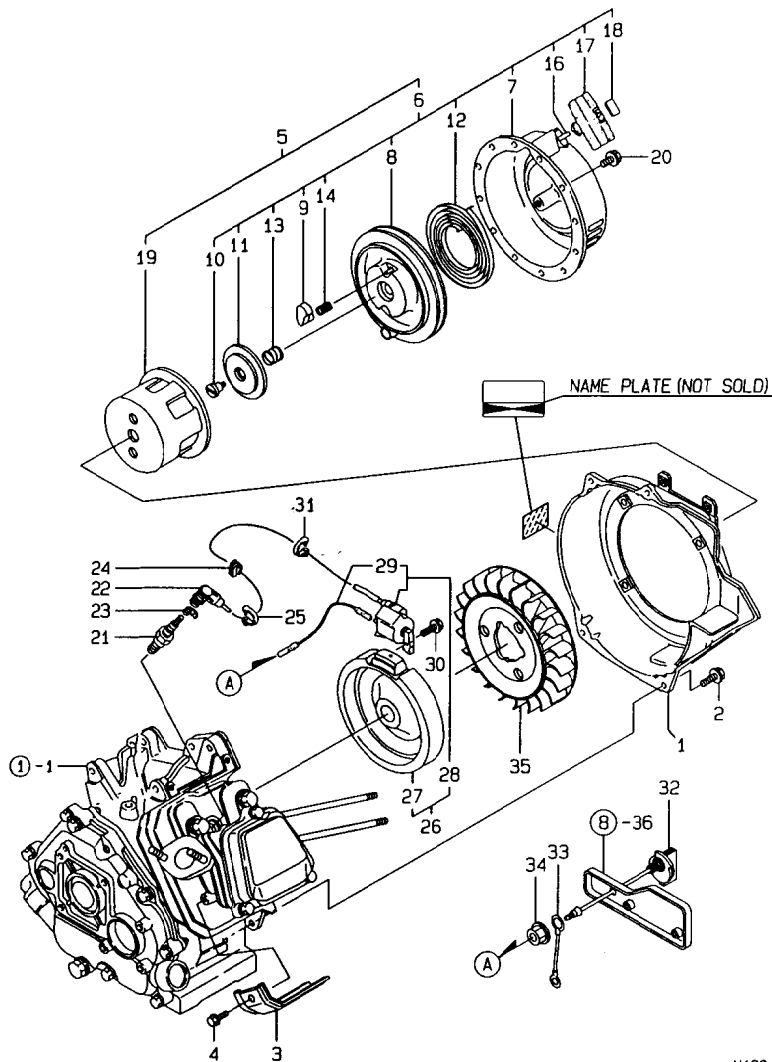
REF. NO.	LEV. 0	PART NO.	DESCRIPTION	Q'TY						I	P	U	A	R
				(A)	(B)	(C)	(D)	(E)	(F)					
2	.	160690-61301	SPINDLE, GOVERNOR	1										1
3	.	160690-61311	SHAFT, GOV. LEVER	1										1
4	.	160690-61450	WASHER	1										1
5	.	160690-61600	GEAR ASSY, GOV.	1										1
9	.	160120-76940	WASHER	1										1
10	.	22372-080000	SNAP PIN (JASO 8)	1										10
11	.	160690-66011	SPRING, GOVERNOR	1										1
12	.	160692-66101	CONTROL ASSY	1										1
13	..	160692-66051	LEVER ASSY, CONTROL	1										1
17	...	26117-040088	BOLT M 4X 8 PLATED	1										10
18	..	160690-66111	BASE ASSY, CONTROL	1										1
19	...	160690-66143	BASE, CONTROL	1										1
22	...	160520-66291	SPRING	2										1
23	...	26117-040257	BOLT M 4X 25	1										10
24	...	26117-040357	BOLT M 4X 35	1										10
25	..	160664-66220	SPRING, RETURN	1										1
26	..	160670-66350	COLLAR	1										1
27	..	26347-060002	U-NUT M 6	1										1
28	..	26757-060002	NUT M 6	1										10
29	.	160690-66180	LEVER ASSY, GOVERNOR	1										1
31	..	26366-060002	NUT M 6	1										10
32	.	160690-66200	LINK, THROTTLE	1										1
33	.	160690-66210	SPRING, TENSION	1										1
34	.	26476-060142	BOLT M 6X 14, TAPPING	3										10
35	.	114770-61600	SEAL, OIL	1										1
36	.	160690-66310	PANEL	1										1
37	.	26106-060162	BOLT M 6X 16 PLATED	2										10

REMARKS

 | (REMARKS) "EFFECTIVE MACHINE NO." OF
 |
 | ENGINE IS INDICATED ON THE
 | ENGINE LABEL WHICH IS SHOWN
 | IN FIG.9.
 |

N132451

9. FLY.MAGNET & STARTING DEVICE



N132452

(REMARKS) "EFFECTIVE MACHINE NO." OF

ENGINE IS INDICATED ON THE ENGINE LABEL WHICH IS SHOWN IN FIG.9.

9. FLY.MAGNET & STARTING DEVICE

98.12.15

1B11
(1B02)
NPC-3660

(A)=GA160E-SCSA (D)=
(B)= (E)=
(C)= (F)=

REF. NO.	LEV. 0	PART NO.	DESCRIPTION	-----Q'TY-----						I P/U A R
				(A)	(B)	(C)	(D)	(E)	(F)	
1	.	160698-45110	CASE, FAN (WHITE) (14)	1						1
2	.	26476-060142	BOLT M 6X 14, TAPPING	4						10
3	.	160699-45200	COVER, CYLINDER	1						1
4	.	26476-060142	BOLT M 6X 14, TAPPING	1						10
5	.	160690-76051	STARTER ASSY, RECOIL	1						1
6	..	160690-76251	RECOIL ASSY	1						1
7	...	160690-76511	CASE COMP., STARTER	1						1
8	...	160690-76521	REEL	1						1
9	...	160690-76801	RATCHET	2						1
10	...	160698-76580	SETSCREW	1						1
11	...	160690-76531	GUIDE, RATCHET	1						1
12	...	160690-76540	SPRING, SPIRAL	1						1
13	...	160690-76561	SPRING, FRICTION	1						1
14	...	160690-76570	SPRING, RETURN	2						1
16	...	160690-76630	ROPE, STARTER	1						1
17	...	160690-76620	KNOB, STARTER	1						1
18	...	160690-76830	CAP, KNOB	1						1
19	..	160690-76591	PULLEY, STARTER	1						1
20	.	26106-060082	BOLT M 6X 8 PLATED	4						10
21	.	160793-78010	PLUG, SPARK	1						1
22	.	160700-78040	CAP, PLUG	1						1
23	.	160700-78050	TERMINAL, PLUG	1						1
24	.	160700-78720	GROMMET	1						1
25	.	29610-000950	CLAMP, SPEED 095	1						1
26	.	160690-78083	MAGNET ASSY, FLYWHEEL	1						1
27	..	160690-78542	ROTOR	1						1
28	..	160690-78532	IGNITER	1						1
29	...	160690-78230	CORD, STOP	1						1
30	.	26476-060302	BOLT M 6X 30, TAPPING	2						10
31	.	29610-000650	CLAMP, SPEED 065	1						1
32	.	160611-77250	SWITCH, STOP	1						1
33	.	160495-77260	CODE	1						1
34	.	26366-080002	NUT M 8	1						10
35	.	160699-45010	FAN, COOLING	1						1

REMARKS

(REMARKS) "EFFECTIVE MACHINE NO." OF

ENGINE IS INDICATED ON THE ENGINE LABEL WHICH IS SHOWN IN FIG.9.

N132452

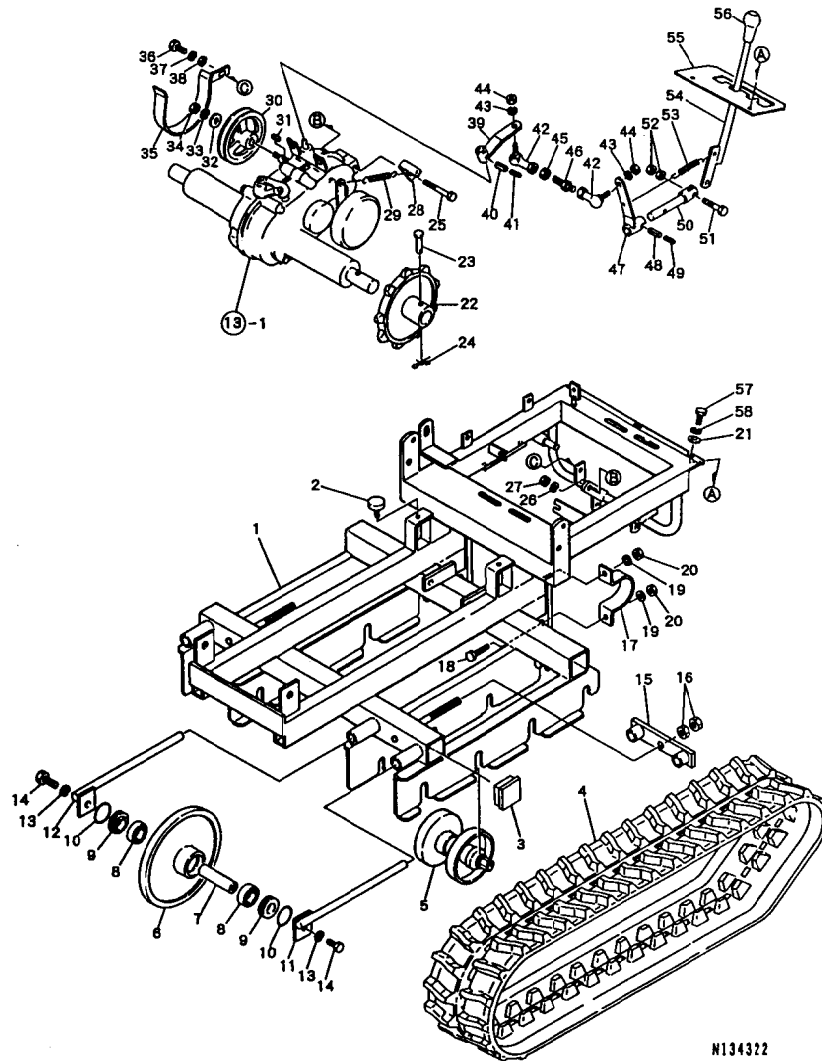
10. FRAME

1C03
(1C02)
NPC-3660

10. FRAME

98.12.15

(A)=T6350 (D)=
(B)= (E)=
(C)= (F)=



REF. NO.	LEV. 0	PART NO.	DESCRIPTION	-----QTY-----						I P/U A R
				(A)	(B)	(C)	(D)	(E)	(F)	
1	.	G46150020000	FRAME	1						
2	.	G46376512000	CUSHION RUBBER	2						
3	.	G46796230010	RUBBER CAP 50X50X2.3	4						
4	.	G46886030000	RUBBER CRAWLER	2						
5	.	G40850160100	TRACK ROLLER ASSY	8						
6	.	G41410120000	FRONT IDLER	2						
7	.	G48501081000	SHAFT(FRONT IDLER)	2						
8	.	G4010146005A	BEARING 6005	4						
9	.	G46016511000	DUST COLLAR	4						
10	.	G40052300450	O-RING G-45	4						
11	.	G41500120100	TENSION ROD(L)	2						
12	.	G41500120000	TENSION ROD(R)	2						
13	.	G40027100012	SPRING WASHER M12	4						
14	.	G40010111225	BOLT M12X25	4						
15	.	G41400120200	TENSION PLATE	2						
16	.	G40020100016	NUT M16	4						
17	.	G46501230000	HOSING STAY	2						
18	.	G40012801235	BOLT M12X35	2						
19	.	G40027100012	SPRING WASHER M12	4						
20	.	G40020100012	NUT M12	4						
21	.	G40026100006	PLAIN WASHER M6	2						
22	.	G41520120000	SPROCKET	2						
23	.	G40031311055	PIN 10X60	2						
24	.	G40031199010	STOPPER PIN 10	2						
25	.	G40010101070	BOLT M10X70	1						
26	.	G40027100010	SPRING WASHER M10	1						
27	.	G40020100010	NUT M10	1						
28	.	G41500121200	SPRING HANGER	1						
29	.	G46062104020	SPRING	1						
30	.	G41500120200	PULLEY	1						
31	.	G40300000018	KEY 5X5X25	1						
32	.	G47082200000	WASHER 30X11X3.2	1						
33	.	G40027100010	SPRING WASHER M10	1						
34	.	G40020100010	NUT M10	1						
35	.	G41500120400	BELT STOPPER	1						
36	.	G40010100816	BOLT M8X16	1						
37	.	G40027100008	SPRING WASHER M8	1						
38	.	G40026100008	PLAIN WASHER M8	1						
39	.	G41500120500	LINK ARM A	1						
40	.	G40030300525	SPRING PIN 5X25	1						
41	.	G40030300325	SPRING PIN 3X25	1						
42	.	G47876410000	LINK BALL	2						
43	.	G40027100008	SPRING WASHER M8	2						
44	.	G40020100008	NUT M8	2						
45	.	G40020100008	NUT M8	1						
46	.	G41500120600	ROD	1						
47	.	G41500121100	LINK ARM B	1						
48	.	G40030300525	SPRING PIN 5X25	1						
49	.	G40030300325	SPRING PIN 3X25	1						
50	.	G41500120800	SHAFT(SHIFT LEVER)	1						
51	.	G40010110635	BOLT M6X35	1						
52	.	G40020100006	NUT M6	2						
53	.	G46062104000	SPRING	1						
54	.	G41500120300	SHIFT LEVER	1						

** CONTINUE **

N134322

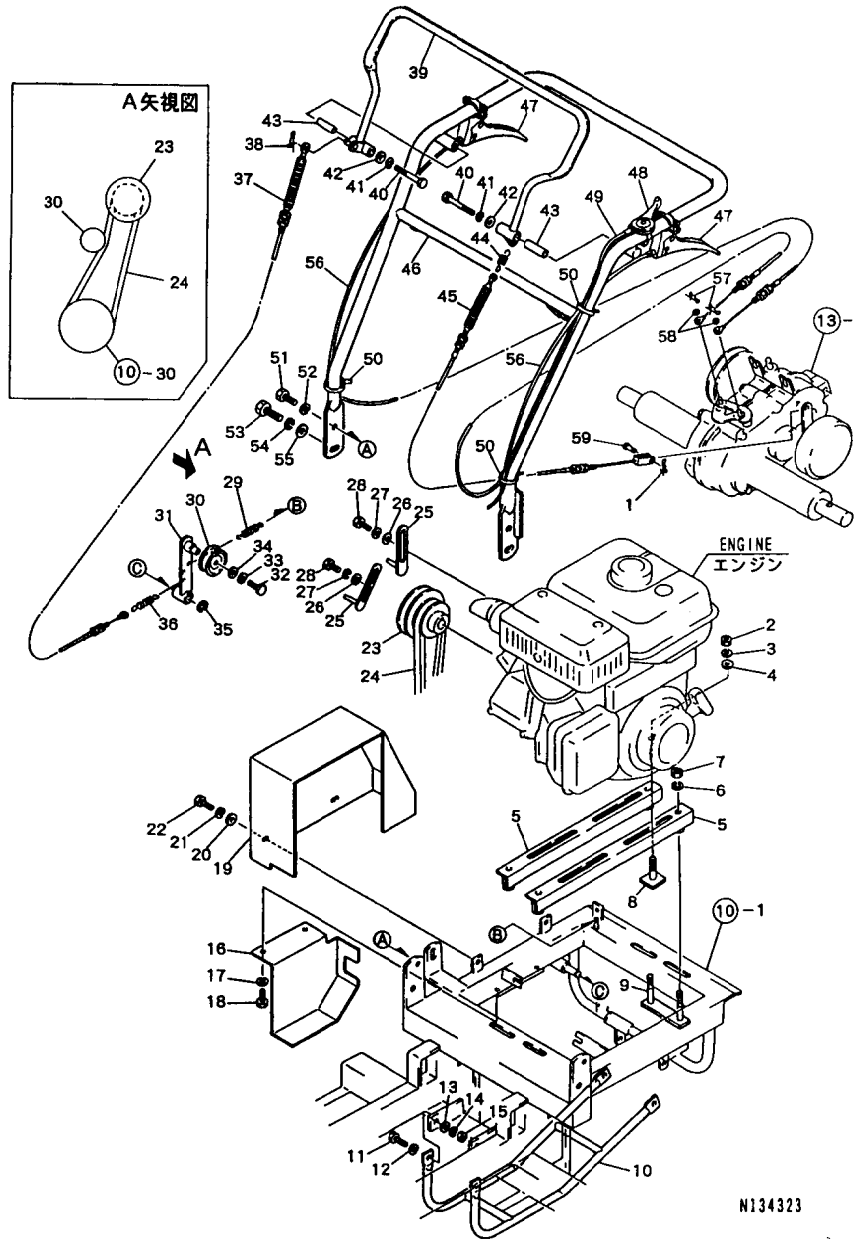
11. CONTROL SECTION

1C05
(1C02)
NPC-3660

11. CONTROL SECTION

98.12.15

(A)=T6350
(B)=
(C)=
(D)=
(E)=
(F)=



N134323

REF. NO.	LEV. 0	PART NO.	DESCRIPTION	Q'TY						I	P	U	A	R
				(A)	(B)	(C)	(D)	(E)	(F)					
1	-	G40031199006	PIN 6,STPRD.STRAIGHT	1										
2	-	G40020100008	NUT M8	4									1	
3	-	G40027100008	SPRING WASHER M8	4										
4	-	G40026100008	PLAIN WASHER M8	4										
5	-	G41502220000	ENGINE BASE	2										
6	-	G40027100010	SPRING WASHER M10	4										
7	-	G40020100010	NUT M10	4										
8	-	G46462076010	ENGINE STAY BOLT	4										
9	-	G41502220100	BASE STAY BOLT	2										
10	-	G41501020300	PROTECTOR	1										
11	-	G40100000015	BOLT M8X25	4										
12	-	G40026100008	PLAIN WASHER M8	4										
13	-	G40026100008	PLAIN WASHER M8	4										
14	-	G40027100008	SPRING WASHER M8	4										
15	-	G40020100008	NUT M8	4										
16	-	G41501120000	PULLEY COVER	1										
17	-	G40027100008	SPRING WASHER M8	2										
18	-	G40010100814	BOLT M8X14	2										
19	-	G41521120000	BELT COVER	1										
20	-	G40026100008	PLAIN WASHER M8	3										
21	-	G40027100008	SPRING WASHER M8	3										
22	-	G40010100816	BOLT M8X16	3										
23	-	G41502220201	ENGINE PULLEY	1										
24	-	G40080300032	V-BELT	1										
25	-	G47212370020	BELT STOPPER	2										
26	-	G40026100008	PLAIN WASHER M8	2										
27	-	G40027100008	SPRING WASHER M8	2										
28	-	G40010100816	BOLT M8X16	2										
29	-	G46492100000	SPRING	1										
30	-	G46066110000	TENSION PULLEY	1										
31	-	G41506020000	TRACTION TENSION ARM	1										
32	-	G40010100612	BOLT M6X12	1										
33	-	G40027100006	SPRING WASHER M6	1										
34	-	G46066070000	WASHER 16X7X1.6	1										
35	-	G40036800012	RETAINING RING E12	1										
36	-	G46172105000	SPRING	1										
37	-	G46496040600	WIRE	1										
38	-	G40031199006	PIN 6,STPRD.STRAIGHT	1									1	
39	-	G41526020000	TRACTION LEVER	1										
40	-	G40010100865	BOLT M8X65	2										
41	-	G40027100008	SPRING WASHER M8	2										
42	-	G47022200010	WASHER 22X9X1.6	2										
43	-	G41416020200	COLLAR	2										
44	-	G46172105000	SPRING	1										
45	-	G41526060000	BRAKE WIRE	1										
46	-	G41416020000	HANDLE	1										
47	-	G46496130000	SIDE CLUTCH LEVER	2										
48	-	G46666132000	THROTTLE LEVER	1										
49	-	G46066043000	THROTTLE WIRE	1										
50	-	G40329060000	CLAMP WIRE	5										
51	-	G40010101025	BOLT M10X25	2										
52	-	G40027100010	SPRING WASHER M10	2										
53	-	G40010101225	BOLT M12X25	2										
54	-	G40027100012	SPRING WASHER M12	2										

** CONTINUE **

N134323

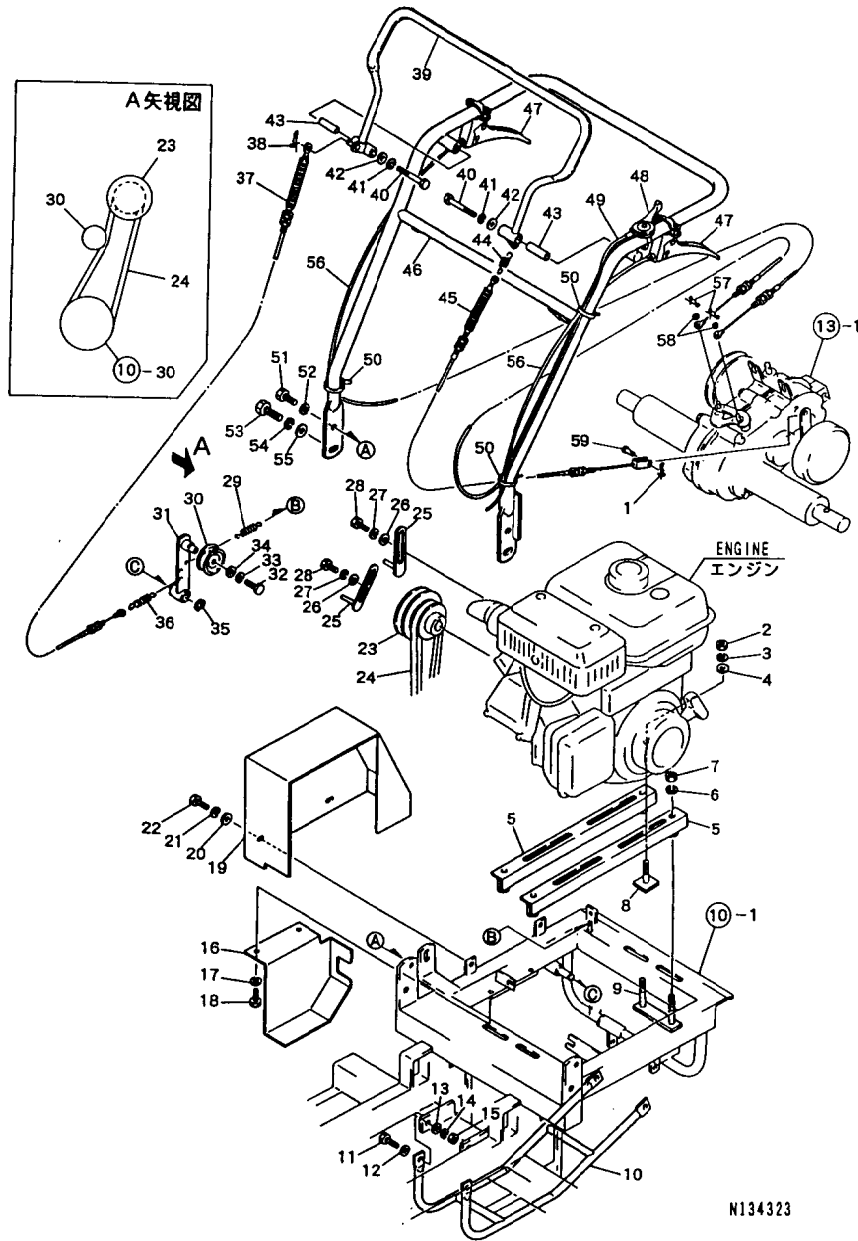
11. CONTROL SECTION

1C06
1C02
NPC-3660

11. CONTROL SECTION

98.12.15

(A)=T6350 (D)=
(B)= (E)=
(C)= (F)=



REF. NO.	LEV. 0	PART NO.	DESCRIPTION	Q'TY						I P/U A R
				(A)	(B)	(C)	(D)	(E)	(F)	
55	.	640026100012	PLAIN WASHER M12	2						
56	.	6415060602D1	SIDE CLUTCH WIRE	2						
57	.	640031199006	PIN 6,STPRD.STRAIGHT	2						1
58	.	640026100006	PLAIN WASHER M6	2						
59	.	646066080000	PIN 6X19	1						

N134323

N134323

12. PLATFORM CARRIER

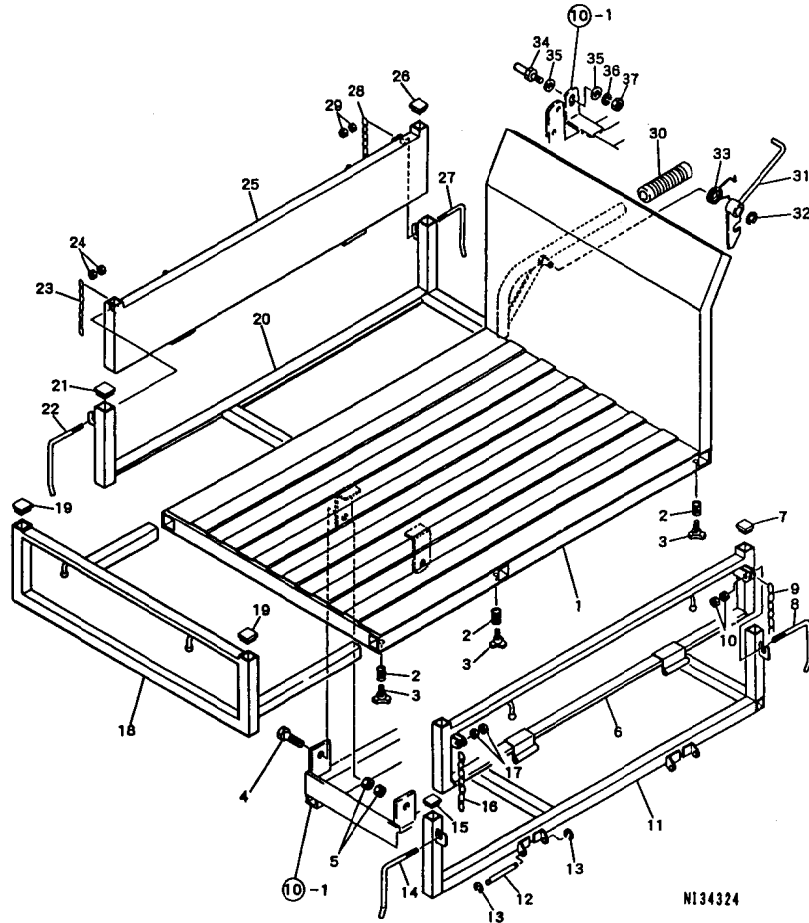
1C07
1C02
NPC-3660

12. PLATFORM CARRIER

98.12.15

(A)=T6350
(B)=
(C)=

(D)=
(E)=
(F)=

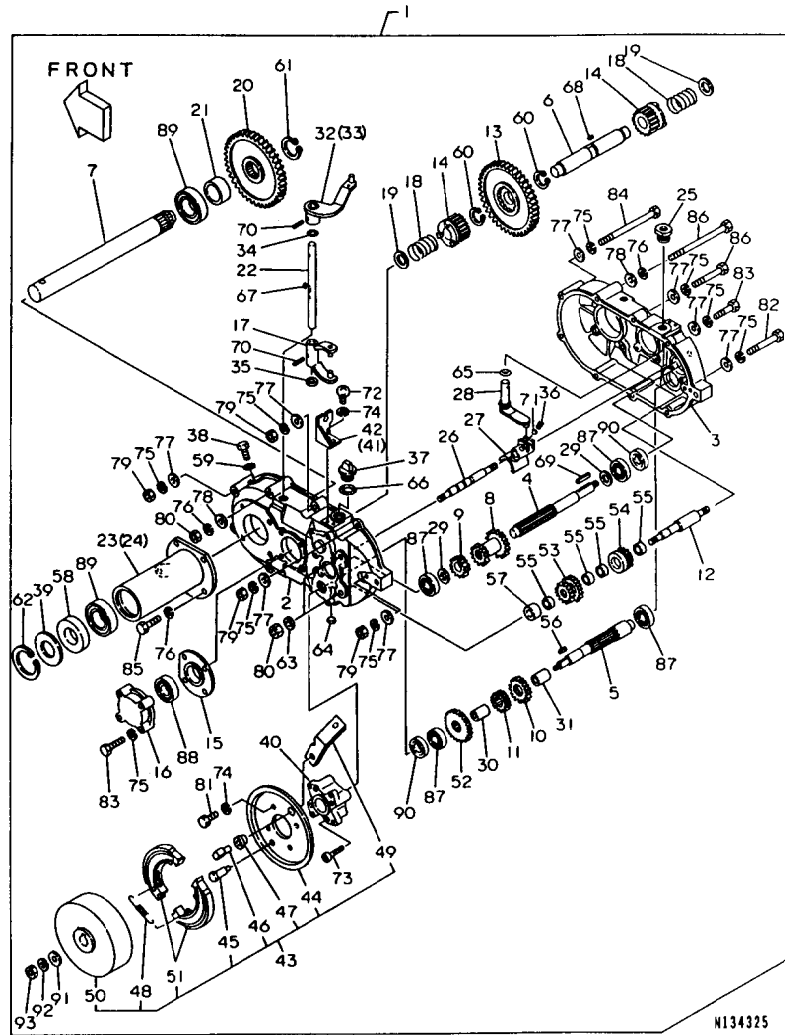


N134324

REF. NO.	LEV. 0	PART NO.	DESCRIPTION	-----QTY-----						I P/U A R
				(A)	(B)	(C)	(D)	(E)	(F)	
1	.	G41525220000	LOADING PALLET	1						
2	.	G40905220400	SPRING	6						
3	.	G40905260000	KNOB BOLT	6						
4	.	G40010111445	BOLT M14X45	2						
5	.	G40020100014	NUT M14	4						
6	.	G41525220100	SIDE DOOR	1						
7	.	G40725260000	CAP 25X25X1.6	2						
8	.	G46062392010	SIDE DOOR HOOK	1						
9	.	G46066140000	CHAIN	1						
10	.	G40020100010	NUT M10	2						
11	.	G41215220200	SIDE DOOR FRAME(L)	1						
12	.	G40855220400	PIN	4						
13	.	G40036800006	RETAINING RING E6	8						
14	.	G46062392000	SIDE DOOR HOOK	1						
15	.	G40725260000	CAP 25X25X1.6	3						
16	.	G46066140000	CHAIN	1						
17	.	G40020100010	NUT M10	2						
18	.	G41525220200	FRONT DOOR	1						
19	.	G40725260000	CAP 25X25X1.6	2						
20	.	G41215220100	SIDE DOOR FRAME(R)	1						
21	.	G40725260000	CAP 25X25X1.6	3						
22	.	G46062392010	SIDE DOOR HOOK	1						
23	.	G46066140000	CHAIN	1						
24	.	G40020100010	NUT M10	2						
25	.	G41525220100	SIDE DOOR	1						
26	.	G40725260000	CAP 25X25X1.6	2						
27	.	G46062392000	SIDE DOOR HOOK	1						
28	.	G46066140000	CHAIN	1						
29	.	G40020100010	NUT M10	2						
30	.	G47276030000	GRIP 25.4(BLACK)	1						
31	.	G46062393000	DUMP HOOK LEVER	1						
32	.	G40036800012	RETAINING RING E12	1						
33	.	G46062104040	SPRING	1						
34	.	G46062070010	DUMP HOOK BOLT	1						
35	.	G40026100012	PLAIN WASHER M12	2						
36	.	G40027100012	SPRING WASHER M12	1						
37	.	G40020100012	NUT M12	1						

N134324

13. TRANSMISSION



1C09
1C08
NPC-3660

13. TRANSMISSION

98.12.15

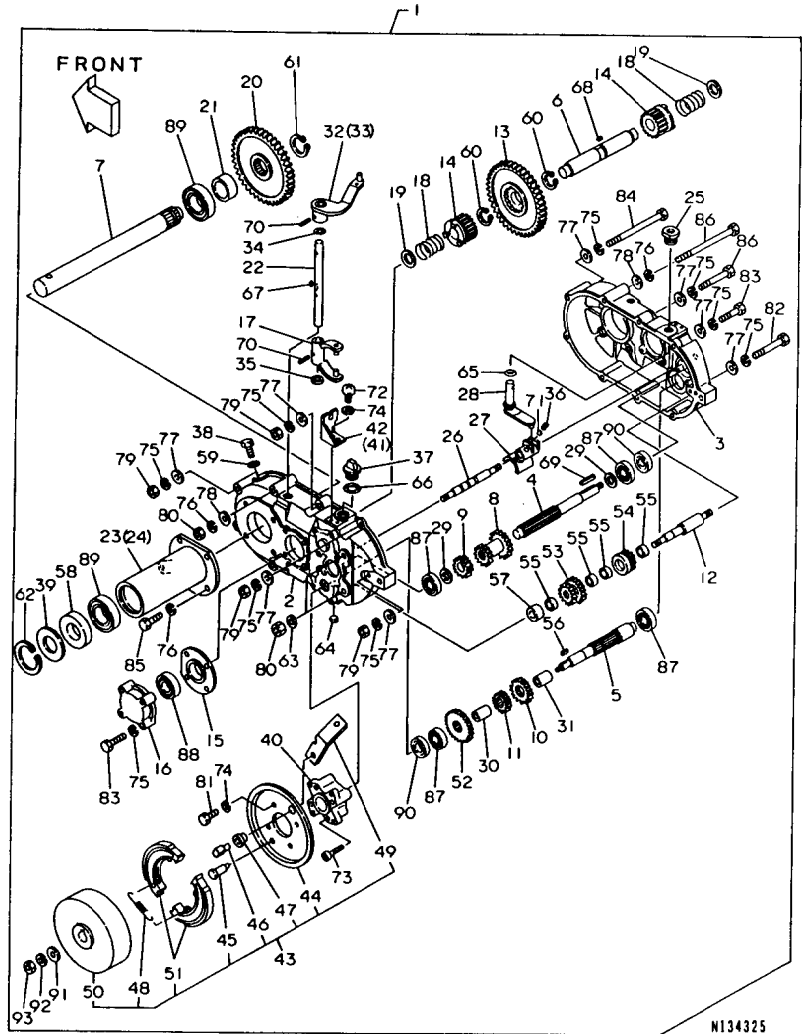
(A)=T6350 (D)=
(B)= (E)=
(C)= (F)=

REF. NO.	LEV. 0	PART NO.	DESCRIPTION	Q'TY						I	P	U	A	R
				(A)	(B)	(C)	(D)	(E)	(F)					
1	.	G41500160100	TRANSMISSION ASSY	1										
2	..	G46150016700	CASE L, TRANSMISSION	1										
3	..	G46150016701	CASE R, TRANSMISSION	1										
4	..	G46150016702	INPUT AXIS	1										
5	..	G46150016703	BRAKE AXIS	1										
6	..	G46150016704	CLUTCH AXIS	1										
7	..	G46150016705	DRIVE SHAFT	2										
8	..	G46150016706	SLIDE GEAR 14/19	1										
9	..	G46150016707	TOP GEAR 24T	1										
10	..	G46150016708	LOW GEAR 25T	1										
11	..	G46150016709	20T GEAR	1										
12	..	G46150016710	REVERSE AXIS	1										
13	..	G46150016711	CLUTCH GEAR	1										
14	..	G46150016712	SIDE CLUTCH GEAR	2										
15	..	G46150016713	CLUTCH METAL	2										
16	..	G46150016714	BEARING COVER	2										
17	..	G46150016715	GEAR SHIFTER	2										
18	..	G46150016716	CLUTCH SPRING	2										
19	..	G46150016717	COLLAR	2										
20	..	G46150016718	DRIVE SHAFT GEAR	2										
21	..	G46150016719	COLLAR	2										
22	..	G46150016720	CLUTCH ROD	2										
23	..	G46150016721	DRIVE SHAFT HOLDER L	1										
24	..	G46150016722	DRIVE SHAFT HOLDER R	1										
25	..	G46150016723	SHIFT LEVER GUIDE	1										
26	..	G46150016724	SHIFTER ROD	1										
27	..	G46150016725	GEAR SHIFTER A	1										
28	..	G46150016726	SHIFT LEVER 12	1										
29	..	G46150016727	COLLAR	2										
30	..	G46150016728	COLLAR 12	1										
31	..	G46150016729	COLLAR 15	1										
32	..	G46150016730	CLUTCH LEVER L	1										
33	..	G46150016731	CLUTCH LEVER R	1										
34	..	G46150016732	O-RING, CLUTCH ROD	2										
35	..	G46150016733	BLINDED TAP	2										
36	..	G46150016734	SPRING, SHIFT FORK	1										
37	..	G46150016735	OIL SUPPLY PLUG	1										
38	..	G46150016736	WASTE OIL PLUG	1										
39	..	G46150016737	COVER OILSEAL	2										
40	..	G46150016738	BRAKE HOLDER	1										
41	..	G46150016739	WIRE METAL L	1										
42	..	G46150016740	WIRE METAL R	1										
43	..	G46150016741	BRAKE ASSY	1										
44	...	G46150016748	BRAKE COVER	1										
45	...	G46150016749	BRAKE SHOE PIN	1										
46	...	G46150016750	BRAKE KAMU	1										
47	...	G46150016751	BUSH	1										
48	...	G46150016752	SPRING	2										
49	...	G46150016753	BRAKE LEVER	1										
50	...	G46150016754	BRAKE DRUM	1										
51	...	G46150016755	SHOE	2										
52	..	G46150016742	GEAR 17T	1										
53	..	G46150016743	REVERSE GEAR 15/20	1										
54	..	G46150016744	REVERSE GEAR 14T	1										

** CONTINUE **

N134325

13. TRANSMISSION



N134325

1C10
1C08
NPC-3660

13. TRANSMISSION

98.12.15

(A)=T6350 (D)=
(B)= (E)=
(C)= (F)=

REF. NO.	LEV. 0	PART NO.	DESCRIPTION	Q'TY						I	P	U	A	R
				(A)	(B)	(C)	(D)	(E)	(F)					
55	..	G46150016745	BUSHING	4										
56	..	G40300000525	KEY 5X5X25	1										
57	..	G46150016747	COLLAR REVERSE AXIS	1										
58	..	G46150016748	OIL SEAL TC305512	2										
59	..	G40025100010	SEAL WASHER 10	1										
60	..	G40036100023	RETAINING RING S23	2										
61	..	G40036100030	RETAINING RING S30	2										
62	..	G46150016749	RETAINING RING H55	2										
63	..	G40025100010	SEAL WASHER 10	4										
64	..	G46150016750	SEAL CAP 32	1										
65	..	G40052100140	O-RING P14	1										
66	..	G40052100180	O-RING P18	1										
67	..	G40300004410	KEY 4X4X10	2										
68	..	G40300005510	KEY 5X5X10	1										
69	..	G40300000018	KEY 5X5X25	1										
70	..	G40030300422	SPRING PIN 4X22	4										
71	..	G40048109998	STEEL BALL 8	1										
72	..	G40010700614	SCREW M6X14	4										
73	..	G40100000013	BOLT M6X45	4										
74	..	G40027100006	SPRING WASHER M6	8										
75	..	G40027100008	SPRING WASHER M8	20										
76	..	G40027100010	SPRING WASHER M10	10										
77	..	G40026100008	PLAIN WASHER M8	12										
78	..	G40026100010	PLAIN WASHER M10	9										
79	..	G40020100008	NUT M8	7										
80	..	G40020100010	NUT M10	6										
81	..	G40010100815	BOLT M8X15	4										
82	..	G40010100860	BOLT M8X60	3										
83	..	G40100000022	BOLT M8X35	10										
84	..	G40101008110	BOLT M8X110	2										
85	..	G40100000028	BOLT M10X30	8										
86	..	G40101010120	BOLT M10X120	2										
87	..	G40040106003	BALL BEARING 6003	4										
88	..	G40040106004	BALL BEARING 6004	2										
89	..	G40040106006	BALL BEARING 6006	4										
90	..	G46150016749	OIL SEAL TC173207	2										
91	..	G40026100010	PLAIN WASHER M10	1										
92	..	G40027100010	SPRING WASHER M10	1										
93	..	G40020100010	NUT M10	1										

N134325

PART NO.	GRP. NO.	REF. NO.	LOC. NO.	PART NO.	GRP. NO.	REF. NO.	LOC. NO.	PART NO.	GRP. NO.	REF. NO.	LOC. NO.	PART NO.	GRP. NO.	REF. NO.	LOC. NO.
G40010100612	11	32	1C05	G40027100008	10	37	1C03	G40329060000	11	50	1C05	G46066043000	11	49	1C05
G40010100616	10	57	1C04			43	1C03	G40725260000	12	7	1C07	G46066070000	11	34	1C05
G40010100814	11	18	1C05		11	3	1C05			15	1C07	G46066080000	11	59	1C06
G40010100815	13	81	1C10			14	1C05			19	1C07	G46066110000	11	30	1C05
G40010100816	10	36	1C03			17	1C05			21	1C07	G46066140000	12	9	1C07
	11	22	1C05			21	1C05			26	1C07			16	1C07
		28	1C05			27	1C05	G40850160100	10	5	1C03			23	1C07
G40010100860	13	82	1C10			41	1C05	G40855220400	12	12	1C07			28	1C07
G40010100865	11	40	1C05		13	75	1C10	G40905220400	12	2	1C07	G46150016700	13	2	1C09
G40010101025	11	51	1C05	G40027100010	10	26	1C03	G40905260000	12	3	1C07	G46150016701	13	3	1C09
G40010101070	10	25	1C03			33	1C03	G41215220100	12	20	1C07	G46150016702	13	4	1C09
G40010101225	11	53	1C05		11	6	1C05	G41215220200	12	11	1C07	G46150016703	13	5	1C09
G40010110635	10	51	1C03			52	1C05	G41400120200	10	15	1C03	G46150016704	13	6	1C09
G40010111225	10	14	1C03		13	76	1C10	G41410120000	10	6	1C03	G46150016705	13	7	1C09
G40010111445	12	4	1C07			92	1C10	G41416020000	11	46	1C05	G46150016706	13	8	1C09
G40010700614	13	72	1C10	G40027100012	10	13	1C03	G41416020200	11	43	1C05	G46150016707	13	9	1C09
G40012801235	10	18	1C03			19	1C03	G41500120000	10	12	1C03	G46150016708	13	10	1C09
G40020100006	10	52	1C03		11	54	1C05	G41500120100	10	11	1C03	G46150016709	13	11	1C09
G40020100008	10	44	1C03		12	36	1C07	G41500120200	10	30	1C03	G46150016710	13	12	1C09
		45	1C03	G40030300325	10	41	1C03	G41500120300	10	54	1C03	G46150016711	13	13	1C09
	11	2	1C05			49	1C03	G41500120400	10	35	1C03	G46150016712	13	14	1C09
		15	1C05	G40030300422	13	70	1C10	G41500120500	10	39	1C03	G46150016713	13	15	1C09
	13	79	1C10	G40030300525	10	40	1C03	G41500120600	10	46	1C03	G46150016714	13	16	1C09
G40020100010	10	27	1C03			48	1C03	G41500120800	10	50	1C03	G46150016715	13	17	1C09
		34	1C03	G40031199006	11	1	1C05	G41500120900	10	55	1C04	G46150016716	13	18	1C09
	11	7	1C05			38	1C05	G41500121100	10	47	1C03	G46150016717	13	19	1C09
	12	10	1C07			57	1C06	G41500121200	10	28	1C03	G46150016718	13	20	1C09
		17	1C07	G40031199010	10	24	1C03	G41500160100	13	1	1C09	G46150016719	13	21	1C09
		24	1C07	G40031311055	10	23	1C03	G41501020300	11	10	1C05	G46150016720	13	22	1C09
		29	1C07	G40036100023	13	60	1C10	G41501120000	11	16	1C05	G46150016721	13	23	1C09
	13	80	1C10	G40036100030	13	61	1C10	G41502220000	11	5	1C05	G46150016722	13	24	1C09
		93	1C10	G40036800006	12	13	1C07	G41502220100	11	9	1C05	G46150016723	13	25	1C09
G40020100012	10	20	1C03	G40036800012	11	35	1C05	G41502220201	11	23	1C05	G46150016724	13	26	1C09
	12	37	1C07		12	32	1C07	G41506020000	11	31	1C05	G46150016725	13	27	1C09
G40020100014	12	5	1C07	G40040106003	13	87	1C10	G41506060201	11	56	1C06	G46150016726	13	28	1C09
G40020100016	10	16	1C03	G40040106004	13	88	1C10	G41520120000	10	22	1C03	G46150016727	13	29	1C09
G40025100010	13	59	1C10	G40040106006	13	89	1C10	G41521120000	11	19	1C05	G46150016728	13	30	1C09
		63	1C10	G40048109998	13	71	1C10	G41525220000	12	1	1C07	G46150016729	13	31	1C09
G40026100006	10	21	1C03	G40052100140	13	65	1C10	G41525220100	12	6	1C07	G46150016730	13	32	1C09
	11	58	1C06	G40052100180	13	66	1C10			25	1C07	G46150016731	13	33	1C09
G40026100008	10	38	1C03	G40052300450	10	10	1C03	G41525220200	12	18	1C07	G46150016732	13	34	1C09
	11	4	1C05	G40080300032	11	24	1C05	G41526020000	11	39	1C05	G46150016733	13	35	1C09
		12	1C05	G40100000013	13	73	1C10	G41526060000	11	45	1C05	G46150016734	13	36	1C09
		13	1C05	G40100000015	11	11	1C05	G46016511000	10	9	1C03	G46150016735	13	37	1C09
		20	1C05	G40100000022	13	83	1C10	G46062070010	12	34	1C07	G46150016736	13	38	1C09
		26	1C05	G40100000028	13	85	1C10	G46062104000	10	53	1C03	G46150016737	13	39	1C09
	13	77	1C10	G40101008110	13	84	1C10	G46062104020	10	29	1C03	G46150016738	13	40	1C09
G40026100010	13	78	1C10	G40101010120	13	86	1C10	G46062104040	12	33	1C07	G46150016739	13	41	1C09
		91	1C10	G4010146005A	10	8	1C03	G46062392000	12	14	1C07	G46150016740	13	42	1C09
G40026100012	11	55	1C06	G40300000018	10	31	1C03			27	1C07	G46150016741	13	43	1C09
	12	35	1C07		13	69	1C10	G46062392010	12	8	1C07	G46150016742	13	52	1C09
G40027100006	10	58	1C04	G40300000525	13	56	1C10			22	1C07	G46150016743	13	53	1C09
	11	33	1C05	G40300004410	13	67	1C10	G46062393000	12	31	1C07	G46150016744	13	54	1C09
	13	74	1C10	G40300005510	13	68	1C10	G46066030030	10	56	1C04	G46150016745	13	55	1C10

PART NO.	GRP. NO.	REF. NO.	LOC. NO.	PART NO.	GRP. NO.	REF. NO.	LOC. NO.	PART NO.	GRP. NO.	REF. NO.	LOC. NO.	PART NO.	GRP. NO.	REF. NO.	LOC. NO.	
G46150016747	13	57	1C10	160493-12550	4	6	1B06	160690-55140	6	15	1B08	160702-56720	7	29	1B09	
G46150016748	13	44	1C09	160495-77260	9	33	1B11	160690-55461	6	14	1B08	160710-55061	6	4	1B08	
		58	1C10	160520-07272	3	4	1B05	160690-56160	7	35	1B09	160710-55360	6	19	1B08	
G46150016749	13	45	1C09	160520-66291	8	22	1B10	160690-56560	7	3	1B09	160710-55370	6	20	1B08	
		62	1C10	160590-21210	5	21	1B07	160690-56570	7	4	1B09	160710-55382	6	21	1B08	
		90	1C10	160590-56530	7	5	1B09	160690-56751	7	32	1B09	160710-55390	6	22	1B08	
G46150016750	13	46	1C09	160592-56540	7	2	1B09	160690-61301	8	2	1B10	160710-78710	6	28	1B08	
		64	1C10	160610-01690	1	7	1B03	160690-61311	8	3	1B10	160760-12530	4	5	1B06	
G46150016751	13	47	1C09	160610-04201	2	1	1B04	160690-61450	8	4	1B10	160762-55150	6	13	1B08	
G46150016752	13	48	1C09	160610-04570	4	1	1B06	160690-61600	8	5	1B10	160769-56640	7	19	1B09	
G46150016753	13	49	1C09	160610-04910	5	16	1B07	160690-66011	8	11	1B10	160769-56660	7	21	1B09	
G46150016754	13	50	1C09	160610-55100	6	12	1B08	160690-66111	8	18	1B10	160793-78010	9	21	1B11	
G46150016755	13	51	1C09	160610-56150	4	7	1B06	160690-66143	8	19	1B10	160802-59370	6	25	1B08	
G46150020000	10	1	1C03		7	34	1B09	160690-66180	8	29	1B10	160810-03180	2	21	1B04	
G46172105000	11	36	1C05	160610-56610	7	18	1B09	160690-66200	8	32	1B10	160810-56580	7	16	1B09	
		44	1C05	160610-56611	7	22	1B09	160690-66210	8	33	1B10	160810-56590	7	17	1B09	
G46376512000	10	2	1C03	160610-56630	7	10	1B09	160690-66310	8	36	1B10	160820-59390	6	26	1B08	
G46462076010	11	8	1C05	160610-56900	7	27	1B09	160690-76051	9	5	1B11	160991-07260	3	6	1B05	
G46492100000	11	29	1C05	160611-77250	9	32	1B11	160690-76251	9	6	1B11	181230-56380	7	8	1B09	
G46496040600	11	37	1C05	160640-56850	7	25	1B09	160690-76511	9	7	1B11			26	1B09	
G46496130000	11	47	1C05	160664-07370	3	5	1B05	160690-76521	9	8	1B11	22252-000160	5	31	1B07	
G46501230000	10	17	1C03	160664-66220	8	25	1B10	160690-76531	9	11	1B11	22372-080000	8	10	1B10	
G46666132000	11	48	1C05	160667-56750	7	28	1B09	160690-76540	9	12	1B11	22512-040120	5	10	1B07	
G46796230010	10	3	1C03	160670-66350	8	26	1B10	160690-76561	9	13	1B11			22	1B07	
G46886030000	10	4	1C03	160690-01330	2	22	1B04	160690-76570	9	14	1B11	22512-040160	5	23	1B07	
G47022200010	11	42	1C05	160690-02220	1	5	1B03	160690-76591	9	19	1B11	22512-050300	5	33	1B07	
G47082200000	10	32	1C03			12	1B03	160690-76620	9	17	1B11	24101-062050	1	6	1B03	
G47212370020	11	25	1C05	160690-03050	2	20	1B04	160690-76630	9	16	1B11			11	1B03	
G47276030000	12	30	1C07	160690-11010	2	2	1B04	160690-76801	9	9	1B11			13	1B03	
G47876410000	10	42	1C03	160690-11100	2	6	1B04	160690-76830	9	18	1B11	26106-060082	4	14	1B06	
G48501081000	10	7	1C03	160690-11110	2	7	1B04	160690-78083	9	26	1B11			9	20	1B11
104200-59170	1	8	1B03	160690-11120	2	8	1B04	160690-78230	9	29	1B11	26106-060102	6	23	1B08	
106990-44660	6	24	1B08	160690-11180	2	9	1B04	160690-78532	9	28	1B11	26106-060162	8	37	1B10	
114250-14400	5	12	1B07	160690-11200	2	10	1B04	160690-78542	9	27	1B11	26106-060202	2	18	1B04	
114250-45310	6	1	1B08	160690-11221	2	11	1B04	160692-55300	6	16	1B08	26106-060302	5	15	1B07	
114252-13800	4	15	1B06	160690-11271	2	12	1B04	160692-56560	7	33	1B09	26106-060352	2	19	1B04	
114252-13910	4	16	1B06	160690-11280	2	13	1B04	160692-56640	7	12	1B09	26106-080142	4	20	1B06	
114252-13950	4	19	1B06	160690-11290	2	14	1B04	160692-56700	7	30	1B09	26106-080202	5	34	1B07	
114252-13960	4	17	1B06	160690-11300	2	16	1B04	160692-56710	7	7	1B09	26117-040088	8	17	1B10	
114270-01600	1	4	1B03	160690-11310	2	17	1B04	160692-56800	7	31	1B09	26117-040257	8	23	1B10	
114299-01760	1	15	1B03	160690-12510	4	3	1B06	160692-66051	8	13	1B10	26117-040357	8	24	1B10	
114299-01950	1	17	1B03	160690-12530	4	4	1B06	160692-66101	8	12	1B10	26216-080182	2	15	1B04	
114770-61600	8	35	1B10	160690-12600	4	2	1B06	160693-56570	7	20	1B09	26347-060002	8	27	1B10	
124060-77680	6	27	1B08	160690-13200	4	9	1B06	160693-56580	7	23	1B09	26366-060002	4	8	1B06	
160110-92610	3	7	1B05	160690-13500	4	12	1B06	160697-56011	7	1	1B09		8	31	1B10	
160110-92710	3	9	1B05	160690-13530	4	13	1B06	160697-56620	7	11	1B09	26366-080002	4	21	1B06	
160120-76940	8	9	1B10	160690-13550	4	10	1B06	160697-56650	7	15	1B09		9	34	1B11	
160120-92700	3	8	1B05	160690-13600	4	11	1B06	160698-45110	9	1	1B11	26476-060142	8	34	1B10	
160310-14550	5	32	1B07	160690-13900	4	18	1B06	160698-76580	9	10	1B11		9	2	1B11	
160310-56980	7	13	1B09	160690-14051	5	1	1B07	160699-45010	9	35	1B11			4	1B11	
160310-56990	7	14	1B09	160690-14571	5	9	1B07	160699-45200	9	3	1B11	26476-060252	1	18	1B03	
160393-55050	6	11	1B08	160690-21201	5	20	1B07	160700-78040	9	22	1B11	26476-060302	9	30	1B11	
160490-14200	5	11	1B07	160690-22011	5	24	1B07	160700-78050	9	23	1B11	26757-060002	8	28	1B10	
160492-56540	7	6	1B09	160690-22300	5	30	1B07	160700-78720	9	24	1B11	28110-100120	3	10	1B05	



YANMAR AGRICULTURAL EQUIPMENT CO.,LTD.

1-32, Chayamachi, Kita-ku, OSAKA 530-8321, JAPAN
Tel:06-6376-6348